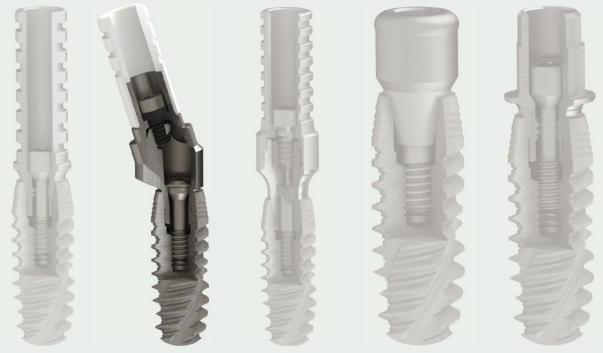


# Transepithelial Multi-Use®



## Multi-Use® Abutments

### Multi-Use® Straight Abutments

TITANIUM 5 NP 3.5

30 Ncm



h1.5 mm  
VCON10N1500



h2.5 mm  
VCON10N2500



h3.5 mm  
VCON10N3500



h4.5 mm  
VCON10N4500



h5.5 mm  
VCON10N5500



h6.5 mm  
VCON10N6500

### Multi-Use® Angled Abutments

TITANIUM 5 NP 3.5

30 Ncm



17° h2.5 mm  
VCON10N2517



17° h3.5 mm  
VCON10N3517



30° h3.5 mm  
VCON10N3530



30° h4.5 mm  
VCON10N4530

## Healing

### Healing Cap for Multi-Use® (Integrated screw)



TITANIUM 5 MU0102

## Impression

### Impression Coping for Multi-Use®

TITANIUM 5



Open Tray  
MU0211



Closed Tray  
MU0202

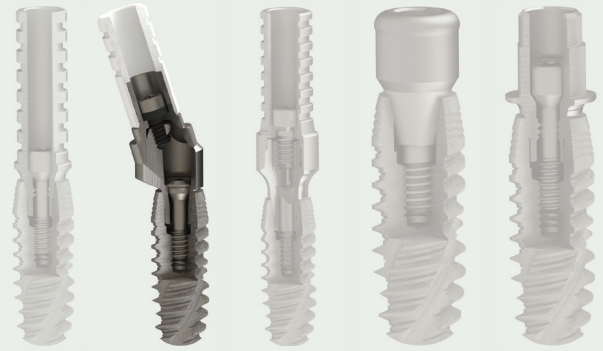
### Multi-Use® Analog

ACERO INOX



MU03

# Transepithelial Multi-Use®



## Screw Retained Restoration

Castable for Multi-Use®



POM

MU0402

Cobalt-Chrome Castable for Multi-Use®



POM CR CO

MU0502

Temporary Abutment for Multi-Use®



TITANIUM 5

MU0602



PEEK

MU0602P

## Prosthetic Screw Multi-Use®



MAX 15 Ncm



TITANIUM DLC

MU0905T



TITANIUM 5

MU0905

## Prosthetic Screw Angled Multi-Use®

Angled Cobalt-Chrome Multi-Use®



1



2

17°

1 VCHA170001  
2 MU0504



1



2

30°

1 VCHA300001  
2 MU0504

## Prosthetic Screw Multi-Use® Angled



MAX 15 Ncm



TITANIUM 5

MU0900-TLB



Short  
VSDTLB-1  
Medum  
VSDTLB-2  
Long  
VSDTLB-3

## Straight Multi-Use® Driver



Contra-Angle  
VDMU-1



Ratchet  
VDMU-2

## Multi-Use® Abutment VulkanLoc



MU11R00